

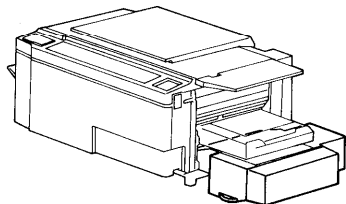
# RTII

<b>Location of Unit . . . . .</b>	<b>..8-3</b>
<b>Section I Parts Location and List . . . . .</b>	<b>8- 4</b>
1. Exterior . . . . .	..8-4
2. Paper Stock Section . . . . .	..8-6
3. Drive Section . . . . .	8- 8
4. Main Control Board . . . . .	8-10
5. DC Harness . . . . .	8-12
6. Main Control Harness . . . . .	8-14
7. Motor Harness . . . . .	8-16
8. Decal and Document . . . . .	..8-18

## LOCATION OF UNITS

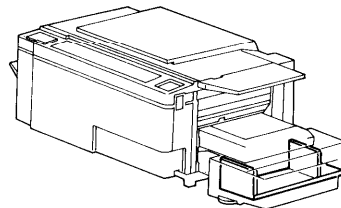
July 20, '84

### 1. EXTERIOR



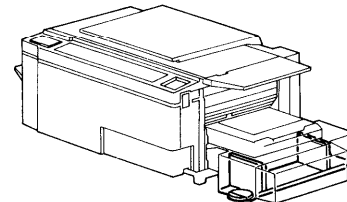
See page 8-4

### 2. PAPER STOCK SECTION



See page 8-6

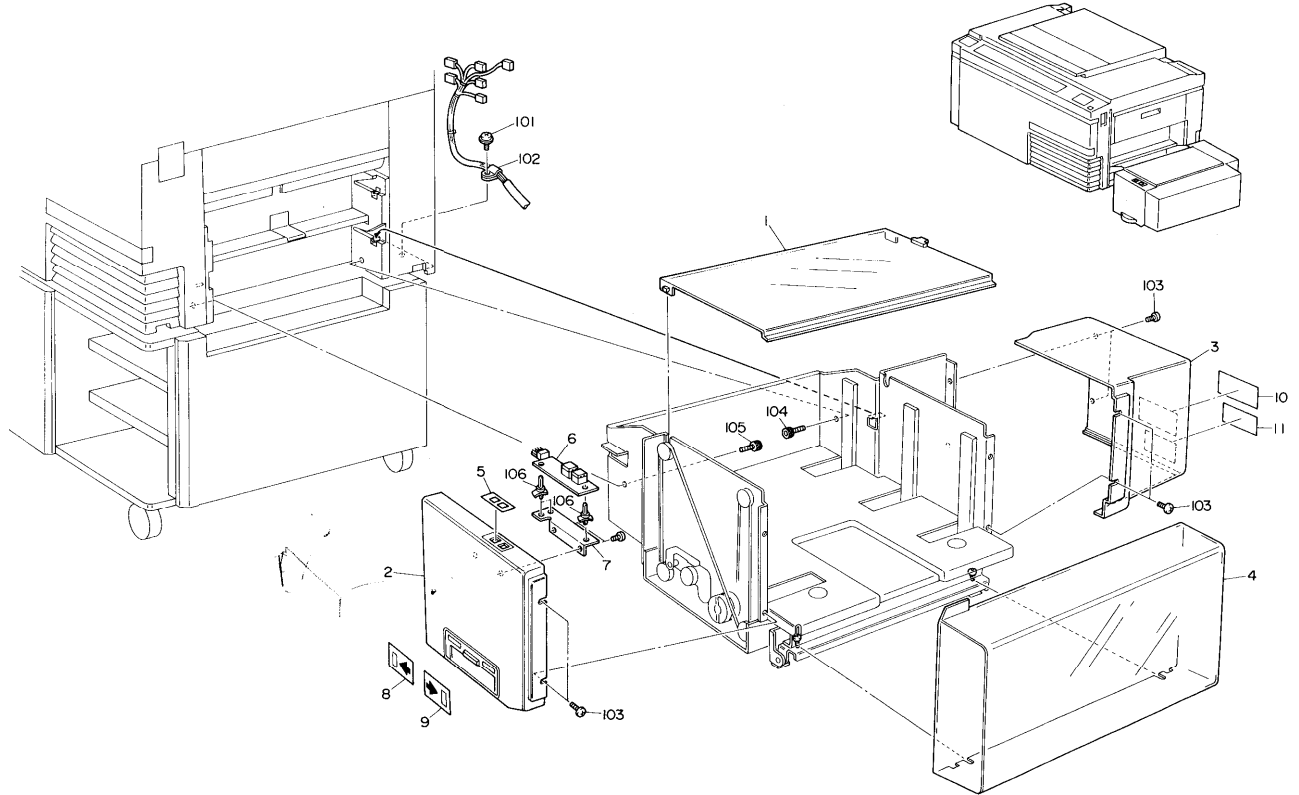
### 3. DRIVE SECTION



See page 8-8

# 1. EXTERIOR

July 20, '84



# 1. EXTERIOR

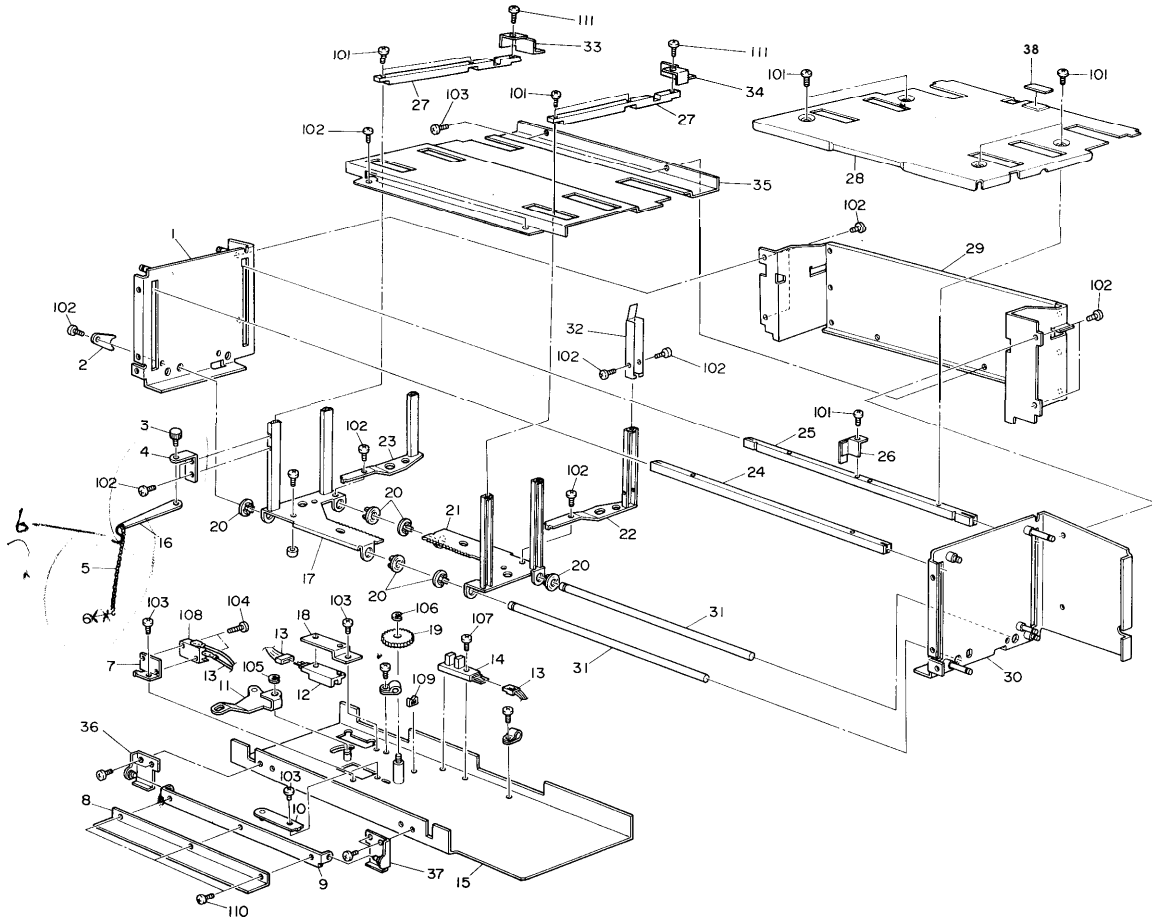
July 20, '84

Index No.	Part No.	Description	Q'ty Per Assembly
1	58971251	Top Cover % MB11	1
2	58971266	Front Cover	1
3	58971265	Rear Cover <i>→ % 59252232 → % 59252234</i>	1
4	58971262	Side Cover <i>5515</i>	1
5	58971264	Operation Skin	1 <i>1/2</i>
6	58975515	Operation Board	1 <i>As46 533</i>
7	58971272	Operation Board Mounting Bracket	1
8	58971257	Decal - Increase Size	1
9	58971258	Decal - Decrease Size	1
10	11050740	Decal - FCC 115V	1
11	56468905	Decal - English, French 115V (CANADA)	1
	54421372	Decal - Warning 220V	1
12	58971282	Decal - Instruction	1
*	58971310	Decal - 4 Languages Instruction	1
13	50252232	Magnetic Catch	1

Index No.	Part No.	Description	Q'ty Per Assembly
101	096434008w	Tapping Screw with Flat Washer - M4x8	1
102	11050034	Nylon Clip - 7N	1
103	08025094	Tapping Screw - M4x8	3
104	05940220w	Hexagon Bolt - M4x22	1
105	05940120w	Hexagon Bolt - M4x12	1
106	11020895	Nylon Stud	2

## 2. PAPER STOCK SECTION

July 20, '84



## 2. PAPER STOCK SECTION

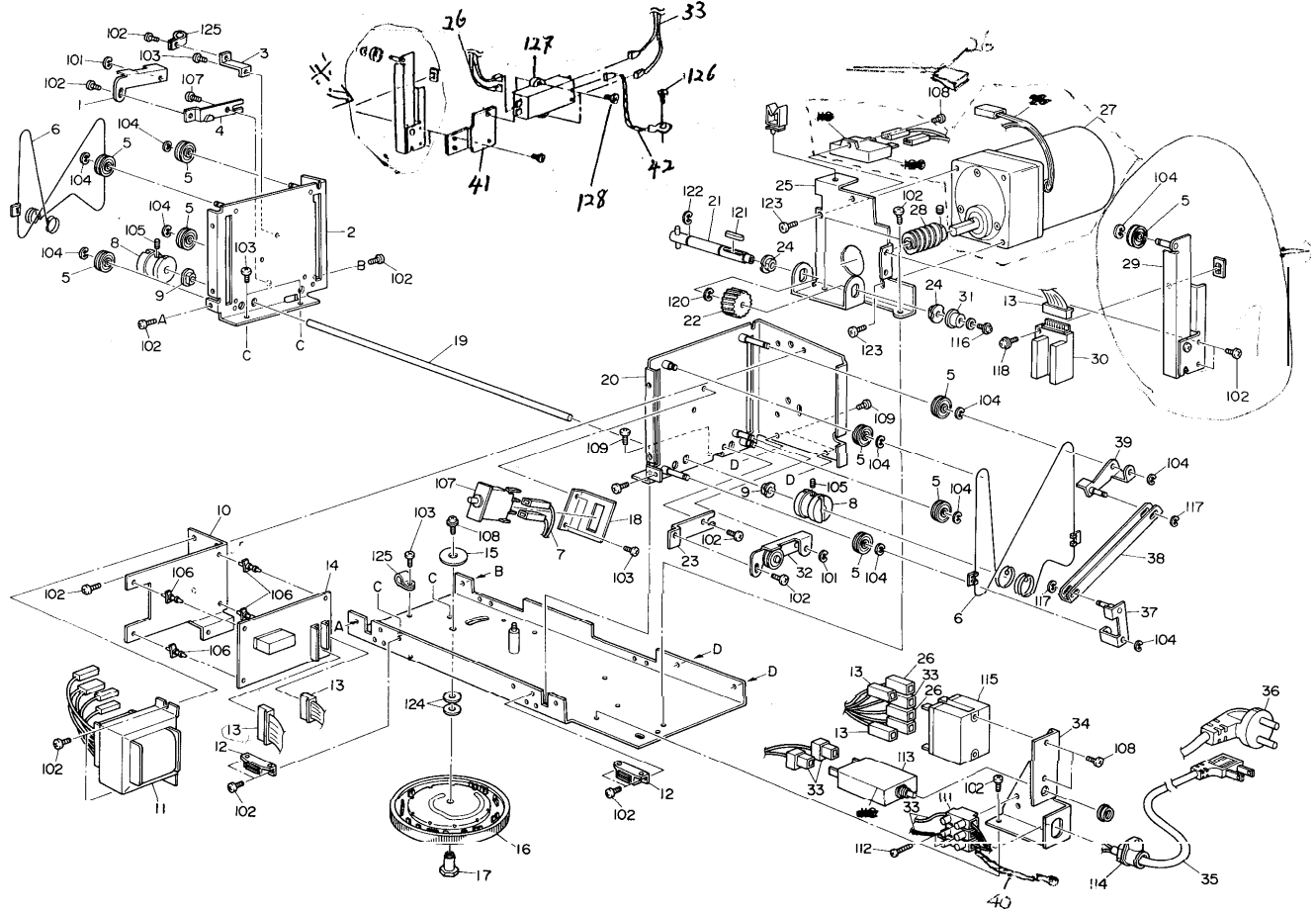
July 20, '84

Index No.	Part No.	Description	Qty Per Assembly
1	58971115	Front Plate <i>0/6</i>	1
2	58971467	Rack Shaft Stopper	1
3	58971489	Stopper Bar Mounting Stud	1
4	58971487	Stopper Bar Mounting Bracket	1
5	58971490	Stopper Chain	1
6	58971488	Hook	1
7	58971493	Microswitch Mounting Bracket	1
8	58971267	Side Cover Bracket	1
9	58971266	Side Cover Hinge	1
10	58971477	Click Spring	1
11	58971473	Size Lever	1
12	52055253	Photointerruptor Pack	1
13	58975530	DC Harness	1
14	52055251	LED sensor Type <i>TX 58971485</i> Stopper Bar <i>i</i>	1
15	58971101	Bottom Plate	1
16	58971484	S topper Bar <i>58971486</i> Spring Plate <i>- Stopper Bar</i>	1
17	58971451	Front Post Rack <i>08914009500</i>	1
18	58971496	Sensor Mounting Bracket <i>Phillips Pan Head Screw - M4x4</i>	1
19	54432657	Gear - 28T	1
20	58971455	Bushing	6
21	58971457	Rear Post Rack	1
22	58971463	Rear Guide Post	2
23	5897 1460	Front Guide Post	1
24	58971372	Right Lift Rod	1
25	58971371	Left Lift Rod	1
26	58971375	Actuator Plate	1
27	58971459	Side Post Grip	2
28	58971369	Tray Bottom Plate <i>→ L</i>	1
29	58971129	Left Cover <i>0/6</i>	1
30	58971121	Rear Plate <i>59252216</i> <i>→ 59252218</i>	1
31	58971466	Rack Shaft	2
32	58971458	Side Post Spring Plate	1
33	58971462	Front Paper Guide	1
34	58971465	Rear Paper Guide	1
35	58971134	Inner Cover <i>→ 59252226</i>	1

Index No.	Part No.	Description	Qty Per Assembly
36	58971109	Front Bracket	1
37	58971106	Rear Bracket	1
	54472927	Friction Pad - B	1
39	58971374	Decal - Paper Size	1
40	5925231	Side Cover	1
	A344277	Holder Side Cover	1
101	03130060W	Phillips Pan Head Screw - M3x6	8
102	04340060W	rapping Screw - M4x6	11
103	03140040W	Phillips Pan Head Screw - M4x4	5
104	03130120W	Phillips Pan Head Screw - M3x12	1
105	D7200060E	Retaining Ring - M6	1
106	07040040C	Toothed Washer - M4	1
107	33140100W	Phillips Pan Head Screw - M4x10	1
108	12040192	Microswitch - OL	1
109	11050106	Harness Clamp	1
110	04340080W	Tapping Screw - M4x8	1
111	03130200W	Phillips Pan Head Screw - M3x20	2

### 3. DRIVE SECTION

July 20, '84



### 3. DRIVE SECTION

July 20, '84

Index No.	Part No.	Description	Q'ty Per Assembly
1	54462630	Front Wire Tightener	1
2	58971115	Front Plate <sup>B/C</sup> 59252211	1
3	58971125	Nylon Clamp Stay	1
4	58971366	Front Wire Bracket	1
5	54462620	Idler Pulley - 20	1
6	58971363	Wire Ass'y	2
7	58975534	Safety Switch Harness $\rightarrow \frac{1}{2} \#33 (5336)$	2
8	58971377	Paper Tray Drive Pulley $\rightarrow \frac{1}{2} \#26 (5331)$	2
9	50530419	Bushing - 10mm $\rightarrow \frac{1}{2} \#26 (5331)$	2
10	58971133	Control Board Mounting Bracket 59252218	2
11	58975520	Transformer - 30W	1
12	50540536	Magnet Catch Ass'y	2
13	58975531	DC Connector Harness	1
14	58975500	Control Board	1
15	58971472	Bottom Plate Washer - 4.5 x 24 x 2mm	1
16	58971470	Paper Size Dial	1
17	58971471	Paper Size Dial Stopper	1
18	58971126	Safety Switch Bracket	1
19	58971373	Drive Shaft <sup>B/C</sup> 59252216 $\rightarrow$ 59252218	1
20	58971121	Rear Plate	1
21	58971353	Drive Shaft	1
22	54462702	Gear - 22T	1
23	58971367	Rear Wire Bracket	1
24	50530223	Bushing - 8mm	2
25	58971351	Drive Motor Bracket $\rightarrow \frac{1}{2} \#33 (5336)$	1
26	58975532	Motor Harness $\rightarrow \frac{1}{2} \#26 (5331)$	1
27	58975537	Motor Harness - AC 1/8W/115V	1
	54465412	Tray Drive Motor - AC 7/8W/220V	1
28	58971352	Worm Gear	1
29	58971355	Paper Volume Detection Guide	1
30	52055253	Photointerruptor Pack	1
31	58971361	Pulley	1
32	54462645	Rear Wire Tightener $\rightarrow \frac{1}{2} \#33 (5336)$	1
33	58975535	Circuit Breaker Harness $\rightarrow \frac{1}{2} \#26 (5331)$	1
34	58971132	AC Terminal Bracket (220/240V)	1

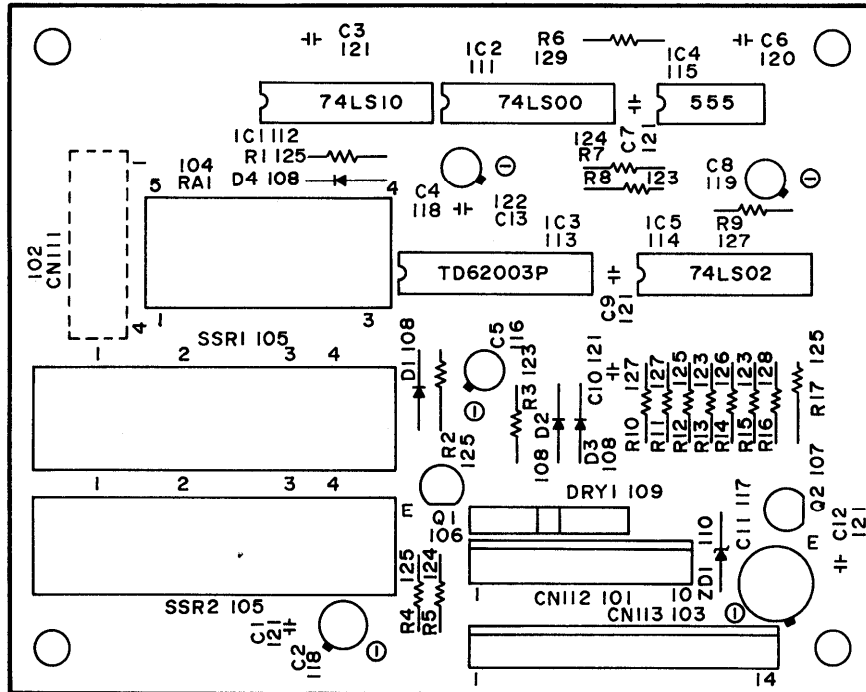
Index No.	Part No.	Description	Q'ty Per Assembly
35	67697930	Power Cord - 115V	1
36	<del>54467968</del>	Power Supply Cord - 220v	1
37	58971277	Bottom Actuator Lever	1
38	58971279	Safety Switch Actuator	1
39	58971274	Top Actuator Lever	1
40	58975337	Grounding Wire - 220V	1
41	58971514	Noise Filter Bracket - 220/240V	1
42	58975335	Noise Filter Grounding Wire	1
43	58971354	Shutter	1
101	07040040C	Toothed Washer - M4	2
102	04340060W	Tapping Screw - M4x6	15
103	03140040W	Philips Pan Head Screw - M4x4	4
104	07200040E	Retaining Ring - M4	11
105	05550050E	Hexagon Headless Set Screw - M5x5	2
106	11060336	Nylon Stud	2
107	12041226	Push Switch	1
108	03140060W	Philips Pan Head Screw - M4x6	3
109	04340040W	Tapping Screw - M4x4	2
110	<del>11070365</del>	<del>Circuit Breaker - 220/240V</del>	1
111	11010359	Terminal - 3P	1
112	03130140W	Philips Pan Head Screw - M3x14	1
113	11070368	Circuit Breaker - 115V	1
114	11060442	Cord Clamp - 220/240V	1
115	12081049	Power Relay - 220V/240V	1
	12081025	Relay - 115V	1
116	03130040W	Philips Pan Head Screw - M3x4	1
117	07200030E	Retaining Ring - M3	2
118	03140100W	Philips Pan Head Screw - M4x10	1
119	16061020	Capacitor - 4.5uF 250V	1
120	16061270	Capacitor - 4.5uF 250V	1
121	09300400D	Parallel Key	1
122	07200060E	Retaining Ring - M6	2
123	03150080E	Philips Pan Head Screw - M5x8	2
124	08075009	Washer - 8.1x14x0.1mm	2
125	11050008	Nylon Clip - 2N	2
126	03140060W	Philips Pan Head Screw - M4x8	1
127	6220127	Noise Filter - 220/240V	1
128	05340060W	Philips Pan Head Screw - M3x6	2

Exclude



# 4. MAIN CONTROL BOARD

July 20, '84



# 4. MAIN CONTROL BOARD

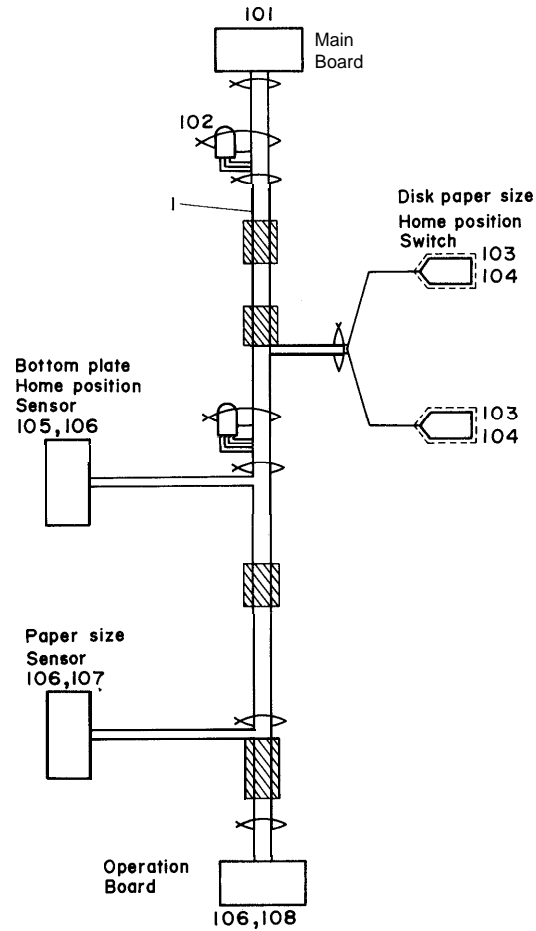
July 20,'84

Index No.	Part No.	Description	Qty Per Assembly
1	58975500	Main Control Board	1

Index No.	Part No.	Description	Qty Per Assembly
101	11001095	Connector - 10P	1
102	11030441	Connector - 3P	1
103	11031349	Connector - 14P	1
104	12081006	Power Relay - AC 100V	1
105	12081024	Solid State Relay - 240V	2
106	14000257	Transistor - 2SA673	1
107	14000324	Transistor - 2SC458	1
108	14010611	Diode - 1S1588	4
109	14010787	Diode - Array - UAP54H	1
110	14020080	Zener Diode - AW01-10	1
111	14070520	IC - HD74LS00	1
112	14070622	IC - 74LSS 10P	1
113	14071002	IC - TD62003P	1
114	14071091	IC - HD74LS02P	1
115	14080124	IC - LM555CN	1
116	16040087	Capacitor - 4.7uF 25V	1
117	16040288	Capacitor - 47uF 25V	1
118	16040903	Capacitor - 10uF 35V	2
119	<del>16041122</del>	Capacitor - 1uF 50V	1
120	16060689	Capacitor - 0.01uF 50V	1
121	16060916	Capacitor - 0.01uF 50V	6
122	16060999	Capacitor - 0.01uF 25V	1
123	16114101	Resistor - 100Ω 1/4T +5%	4
124	16114102	Resistor - 1KΩ 1/4T	2
125	16114103	Resistor - 10KΩ 1/4T +5%	5
126	16114241	Resistor - 240Ω 1/4T +5%	1
127	16114471	Resistor - 470Ω 1/4T +5%	3
128	16114472	Resistor - 4.7KΩ 1/4T +5%	1
129	16114564	Resistor - 560S4 /4T	1

# 5. DC HARNESS

July 20, '84



## 5. DC HARNESS

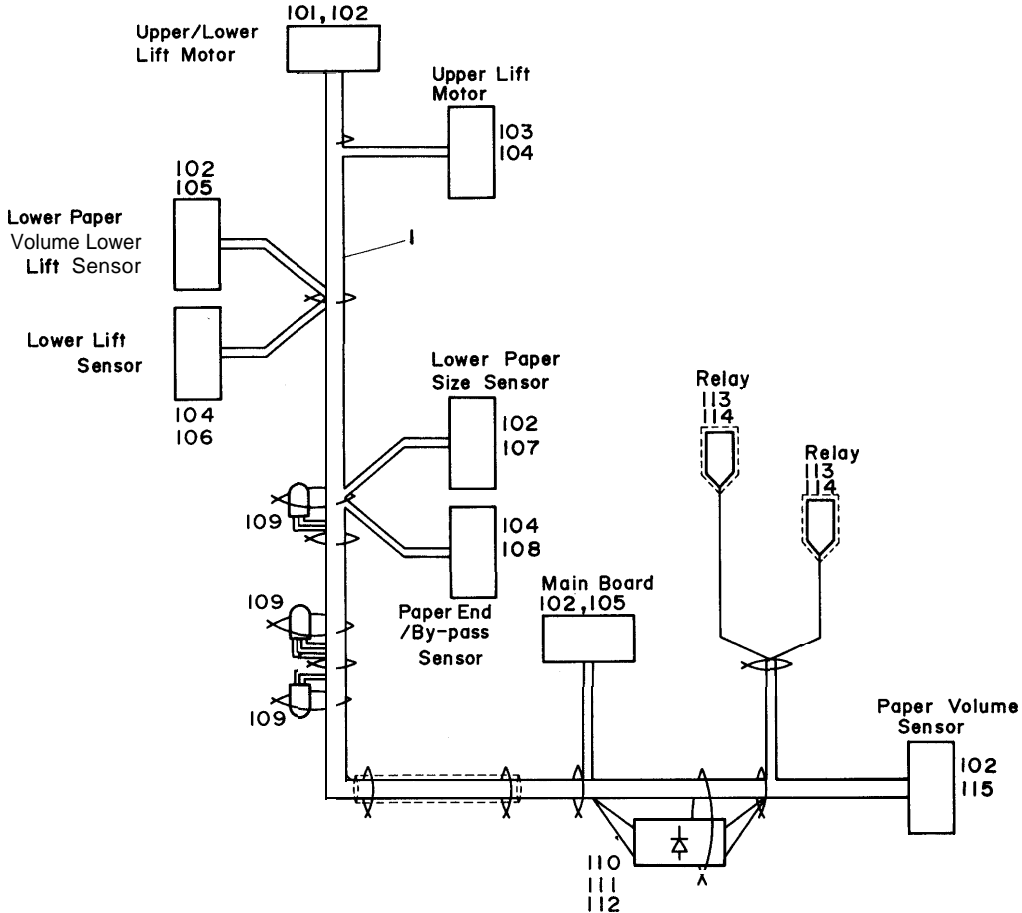
July 20, '84

Index No.	Part No.	Description	Q' ty Per Assembly
1	58975530	DC Harness	1

Index No.	Part No.	Description	Q' ty Per Assembly
101	11031345	Connector - 14P	1
102	11000340	Closed Terminal	2
103	11020796	Insulating Sleeve	2
104	11000277	Fastening Receptacle	2
105	11021620	Connector - 3P	1
106	11001249	Receptacle Terminal	14
107	11021623	Connector - 7P	1
108	11021621	Connector - 4P	1

# 6. MAIN CONTROL HARNESS

July 20, '84



# 6. MAIN CONTROL HARNESS

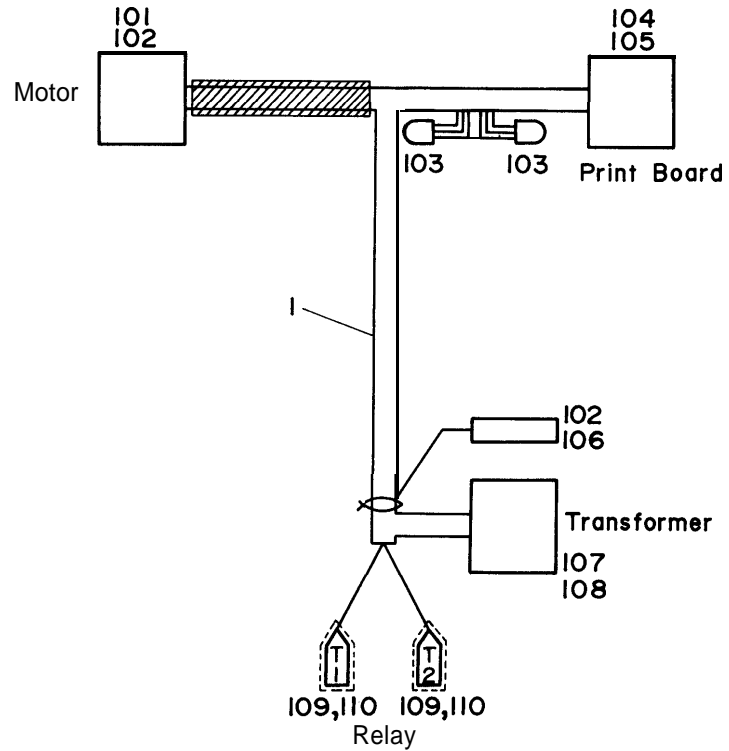
July 20, '84

Index No.	Part No.	Description	Q'ty Per Assembly
1	58975531	DC Harness <i>Connectors</i>	1

Index No.	Part No.	Description	Q'ty Per Assembly
101	11021621	Connector - 4P	1
102	11001249	Receptacle Terminal	42
103	11021661	Connector - 4P	1
104	11001253	Receptacle Terminal	12
105	11021625	Connector - 10P	2
106	11021778	Connector - 4P	1
107	11021784	Connector - 12P	1
108	11021779	Connector - 12P	1
109	11000340	Closed Terminal	3
110	11021286	Connector	1
111	11001156	Contact Pin	2
112	14020388	Diode - W03C	3
113	11020687	Fastening Receptacle	2
114	11000309	Fastening Receptacle	2
115	11021623	Connector - 7P	1

# 7. MOTOR HARNESS

July 20, '84



# 7. MOTOR HARNESS

July 20,'84




Index No.	Part No.	Description	Q'ty Per Assembly
1	58975532	Motor Harness	1

Index No.	Part No.	Description	Q'ty Per Assembly
101	11021516	Connector - 3P	1
102	11001241	Socket - MATE-N-LOCK	4
103	11000340	Closed Terminal	2
104	11021374	Connector - 5265-4P	1
105	11001190	Socket - MATE-N-LOCK	4
106	11021514	Connector - 1P	1
107	11021507	Connector - 2P	1
108	11001239	Pin - MATE-N-LOCK	2
109	11020687	Fastening Receptacle	2
110	11000309	Fastening Receptacle	2



# 8. DECALS AND DOCUMENTS

July 20, '84

<p>1 16 17 22</p>  <p>UPCING EIGHT?</p>	<p>2 16/17</p> 	<p>3</p> 	<p>Operating Instruction Decal.</p> <p>5895 1332</p>	<p>KAC</p>	
<p>5895 1334 KAC</p>	<p>5897 1333 KAC</p>	<p>1335 KAC</p>			

## 8. DECAL AND DOCUMENT

July 20,'84

Index No.	Part No.	Description	Q'ty Per Assembly
1	58971258	Decal - Decrease Size	1
2	58971257	Decal - Increase Size	1
3	58971264	Operation Skin	1

Index No.	Part No.	Description	Q'ty Per Assembly
-----------	----------	-------------	-------------------